



## Features

- 1/4 Inch Sony Exview HAD CCD, 530TVL
- Auto Focus/Auto Iris
- **Max. 432x Zoom (36x Optical/12x Digital)**
- **TDN(ICR), WDR, DSS, OSD**
- Endless 360° Panning
- 0° to 90° Tilting
- Panning/Tilting speed : max. 360°/sec
- **Freeze & Preset**
- Auto parking, Auto-Flip, Privacy masking
- Various protocol compatible



- In-ceiling Mount

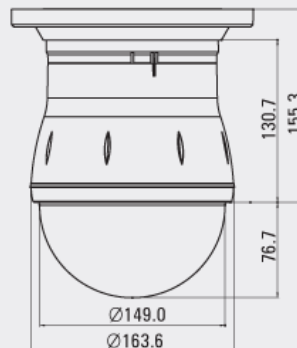
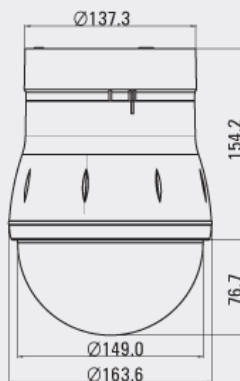
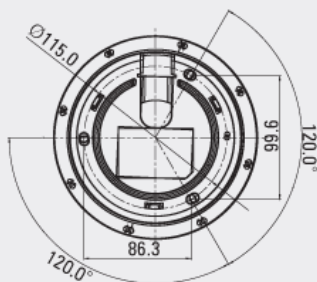


- Wall Mount



- Pendant Mount

## DIMENSIONS



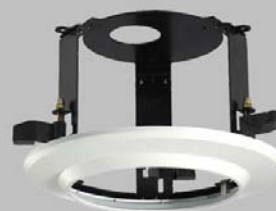
## Optional Accessories



SWB1000 : Wall mount bracket



SPB1000 : Pendant mount bracket



SIB1000 : In-ceiling mount bracket

Model	S1965NX	S1965PX
Signal System	NTSC	PAL
Scanning System	2:1 Interlace	
Scanning Freq. (H)	15.734 kHz	15.625kHz
Scanning Freq. (V)	59.94Hz	50Hz
Sync. System	Internal / Line-Lock	
Image Sensor	SONY 1/4" EXview HAD Interline transfer CCD	
Effective Pixel No. (V)	768(H) x 494(V) 380K	752(H) x 582(V) 440K
H. Resolution	530 TV Lines	
Min. Illumination	1.0Lux (Color), 0.07Lux (Color, DSS), 0.01Lux (BW, DSS) 50 IRE	
Day & Night Type	Electronic sensitivity-up (DSS), ICR (AGC type)	
Video Output	1.0Vp-p (75Ω, composite)	
Video S/N Ratio	More than 50dB (AGC Off)	
Communication	RS-485, Controllable up to 255 cameras simultaneously	
Camera ID / Protocol	256 IDs/Pelco-D, Pelco-P, Panasonic, Samsung selectable	
Lens		
Zoom Ratio	432x Zoom (36x Optical Zoom, 12x Digital Zoom)	
Focal Length	3.4 (W) mm ~ 122.4 (T) mm	
Aperture Range	F1.6 (W) ~ F4.5 (T)	
Pan and Tilt		
Panning/Tilting Range	Pan: 360° endless rotation; Tilt: 90°	
Panning/Tilting Speed	Manual: 1° ~ 360°/sec; Preset: 360°/sec; Swing: 1° ~ 180°/sec	
Panning/Tilting Accuracy	±0.25°	
Preset	128 position with Labels	
Swing / Pattern / Group	8 Swings/4 Patterns (about 5min/Pattern)/8 groups (max. 20)	
Main Functions		
OSD Menu	ON/OFF (English)	
Focus Control	Auto/Manual/Semi-Auto	
Color / BW Switching	Supplied	
Day/Night	Auto/Day/Night (ICR)	
WDR	ON/OFF	
Electronic Shutter	1/4~1/10,000sec	1/3~1/10,000sec
Iris / Gain Control	Auto/Manua(F1.6~F4.5); Auto/Manual(-3dB~28dB)	
Brightness Control	Adjustable (0~31)	
White Balance	Auto/Manual (Red, Blue Gain Adjustable)	
BLC / Flickerless	ON/OFF	
Freeze & Preset	ON/OFF	
Negative / Freeze Mode	ON/OFF	
Reverse / Mirror	ON/OFF (180° rotation); ON/OFF	
Power-up Action	Resume the last action executed (Preset, Swing, Group)	
Auto Parking / Flip	ON/OFF; ON/OFF (rotates dome 180° at bottom of tilt travel)	
Privacy Zone	ON/OFF(8 zone settings)	
Alarm I/O	4 port coupler inputs, 2 relay outputs	
Image Setup	Global / Local (setting WB & AE)	
Electrical & General		
Power	AC 24V / 2A	
Fuse	48VA	
Dimensions (approx.)	Dome: 149(Φ); Housing: 163.6(Φ) x 230.9(H) mm (without decorative bottom ring)	
Weight (net)	Approx. [Main Body] 2.5kg, [Wall Mount] 768g, [Pendant Mount] 880g, [In-Ceiling] 984g	
Material	Aluminum	